

# GET <sup>TO THE</sup> GULCH RETREAT PLANNER



**MT. RUSHMORE  
RESORT & LODGE**  
*at Palmer Gulch*



# GET TO THE GULCH FOR FUN, FOOD AND A

*wonderful stay*

• • • • •

The Mount Rushmore Resort at Palmer Gulch has it all—breathtaking vistas, accommodations to meet your need for luxury or economy, fun activities to fill your days and nights, and dining options for every taste.

Our beautiful, two-in-one resort is nestled at the foot of Black Elk Peak in the beautiful Black Hills of South Dakota. At 7,242 feet in elevation, there is no U.S. summit east of the Rocky Mountains higher than Black Elk. But its height does not overshadow the real star of the area—the Mount Rushmore National Monument and its presidential sculptures perched on their own 5,700-foot granite face.

The Crazy Horse Memorial is nearby, and many trails into the Norbeck Wildlife Preserve and Black Elk Wilderness await your next outdoor adventure.

The resort has a long, rich history. Entrepreneurs created the Black Hills Country Club in the valley in 1925. Horseback riding, picnicking, hiking and, of course, challenging golf started drawing visitors from all over the world.

Many guests are on the move around the clock, taking in all the area has to offer. Others choose to stay closer to home, enjoying the great outdoors amid the comforts and activities our resort has to offer. That's why the Palmer Gulch's long-time slogan, "Where you do as much, or as little, as you please," still holds true today.

Whether you choose a spacious hotel suite at the Mount Rushmore Lodge at Palmer Gulch or a rustic cabin at the resort's KOA Campground, you will enjoy this Black Hills experience.



Please use this guide to help you **"GET TO THE GULCH"** with a three-step plan for a perfect vacation for your family, a welcoming stay for your group or a productive meeting for your business.



- 1) PICK YOUR DATES;  
CHOOSE YOUR  
ACCOMMODATIONS.**
- 2) COOK IN? COOK OUT?  
PLAN YOUR DINING  
OPTIONS.**
- 3) REVIEW ALL THE  
ACTIVITIES AND MAP  
OUT A PLAN.**



The Mount Rushmore Resort at Palmer Gulch offers a great destination for visitors. The Mount Rushmore Lodge at Palmer Gulch features roomy hotel suites, along with adjacent lodges and a collection of rustic mountain cabins. Our spacious KOA Campground has comfortable cabins and great sites for RVs and tents.

**CHOOSE FROM:**

- **Lodge at Palmer Gulch**
  - 61-guest room hotel features royal and presidential suites
- **Grand Executive Lodge**
  - Large two-story cabin, two master suites, two bedrooms, three bathrooms, sleeps 12
- **Executive Lodges**
  - Three bedrooms, two bathrooms, sleeps 8
  - Linens and towels are provided
- **Reunion Cabins**
  - Neighboring cabins perfect for group stays
  - Linens and towels are provided
- **Mountain Cabins**
  - Fireplaces or electric heat, some kitchens, various sizes
  - Linens and towels are provided
- **KOA Deluxe Cabins**
  - Kitchenette, bathroom, separate sleeping areas, heat/AC/TV
  - Linens and towels are provided
- **KOA Camping Cabins**
  - One- and two-room cabins with bed, mattress, electricity
  - No linens or towels provided
- **KOA Deluxe RV Sites**
  - Patio with table and chairs, full hookups, gas grills, 50/30/20 amp, swing
- **KOA RV Sites**
  - 30 or 50 amp, full hookup
  - 30 amp water/electric
- **KOA Tent Sites**
  - Picnic table, fire ring, no utilities
- **KOA Deluxe Tent Sites**
  - Covered picnic table with electrical outlet and USB charging port. Fire ring and picnic table





# MOUNT RUSHMORE LODGE AT PALMER GULCH

**When you enter the great room at the Mount Rushmore Lodge at Palmer Gulch, our two-story fireplace, constructed from granite from the Crazy Horse Memorial nearby, will impress you with the quality of this grand building. That's just for starters.**

**The Lodge has 61 spacious guest rooms, featuring royal and presidential suites.**

*As a guest at the Mount Rushmore Lodge, when you are not outside enjoying our picnic area, fire ring and all the beauty the Black Hills have to offer, you'll want to enjoy our stunning pool complex with hot tub, poolside seating, playgrounds, and more. We are open from May 1 through early October. We are a nonsmoking facility. Pets accepted in most rooms with a pet fee.*



# LODGE ROOMS

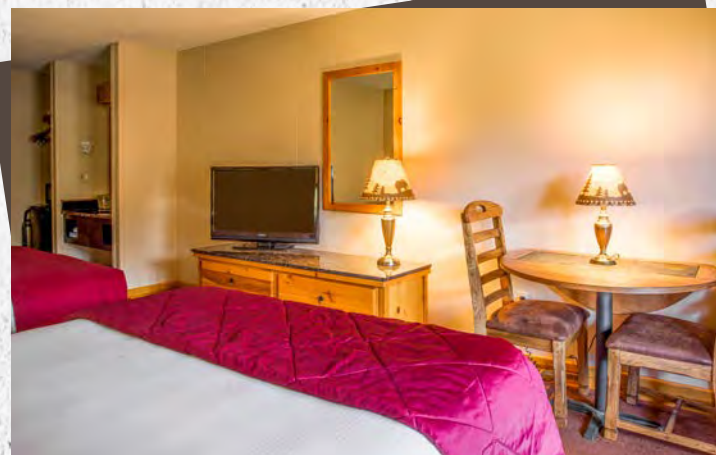
## PRESIDENTIAL SUITE

Rustic log furnishings, large room with fireplace and a patio balcony with a great view of the Black Hills create a special space for your stay. A king bed and queen sleeper sofa provide space for four people. The kitchenette has a small refrigerator and microwave.



## ROYAL SUITE

This two-bedroom, two-bath suite has a queen bed in a room with a bath, and a king bed in the second bedroom. There is a queen sofa sleeper in the living room, making the space perfect for up to six people. The kitchenette has a small refrigerator and microwave.



## PREMIER & STANDARD ROOMS

Premier rooms at the Mount Rushmore Lodge include a balcony or patio with great mountain views. Premier and standard rooms offer varied arrangements—either two queen beds or one king bed, room for two to four people. Rollaway beds and pack and plays are available. All rooms have a mini-fridge and microwave.

# MOUNT RUSHMORE RESORT: IT'S A WINNER!

## WHY STAY ANYWHERE ELSE?

- KOA President's and Founder's Awards
- Named one of the 24 Best Campgrounds in the Midwest by Midwest Living Magazine
- Darrell Booth KOA Lifetime Achievement Award
- South Dakota Great Service Award Winner
- Woodall's 5-Star Winner
- Named one of America's Top 25 Properties for Biking Trails
- Named one of America's Top 25 Properties for Tours/Events







# LARGE CABINS

## GRAND EXECUTIVE LODGE

This two-story cabin is amazing: two master suites, two bedrooms, a living room, three bathrooms, a full kitchen, a spacious deck with propane grill and hot tub. Up to 12 people can enjoy the lodge, which has two king beds, four twin beds, a set of bunk beds and a sofa sleeper. It is a nonsmoking cabin. Pets are not allowed.



## EXECUTIVE LODGES

Vaulted ceilings, great room, roomy deck with propane grill—and that's not all. These cabins have three bedrooms, two bathrooms, a full kitchen and room for eight people with one king bed, one queen bed, two twin beds and a queen sofa sleeper. These are nonsmoking cabins. Pets are not allowed.



## KOA DELUXE CABINS

These 11 cabins provide deluxe comfort amid the pines. They feature kitchenettes, bathrooms and separate sleeping areas that can accommodate six to eight people, depending on the floor plan. Decks, gas grills, cable TV and picnic tables enhance the cabin experience. Linens are provided.





# REUNION CABINS

These cabins are perfect for small- to medium-sized group events. This neighborhood of cabins offers open spaces where friends and family can gather for fun activities.



## REUNION CABINS 21 & 22

Also known as, “The Duplex”, these two cabins, attached by a covered outdoor porch, are mirror images of each other. Both have living rooms, fireplaces and full kitchens with appliances. One bedroom has a queen bed; the second and third bedrooms have two twin beds each. There’s a sofa sleeper in the living room. Eight people will be comfortable in each cabin.



## REUNION ROW CABINS

There are eight separate units in our row cabin building. All connected by a cozy covered porch. Each one-room unit has two queen beds and sleeps up to four people. Cabins have kitchenettes, a fireplace, TV, phone and A/C.





# MOUNTAIN CABINS

## MOUNTAIN CABIN 1

This cabin sleeps up to four people. One bedroom has a king bed and the other has two twin beds. A kitchenette, electric heat and screened porch make for an enjoyable stay. Full bath. No AC/TV.



## MOUNTAIN CABIN 2

This cabin features two bedrooms—one with a queen bed, the other with two twin beds. It sleeps up to four, and has a kitchenette, electric heat and screened porch. Full bath. No AC/TV.



## MOUNTAIN CABIN 3

Up to seven people can stay in this three-bedroom cabin, which has a living room/kitchen area, a fireplace and a screened porch. A king bed is in one bedroom, two twin beds are in another, and a set of bunk beds and a twin bed are in the third bedroom. Full bath. No AC/TV.



## MOUNTAIN CABIN 4

This two-bedroom cabin sleeps six and has a screened porch, a kitchen and electric heat. A queen bed is in one bedroom; the other has two twin beds plus a set of bunk beds. Full bath. No AC/TV.





## MOUNTAIN CABIN 5

Up to six people can sleep in this two-bedroom cabin. One bedroom has a double bed. The other bedroom has a set of bunks and two twin beds. It has a full kitchen, electric heat and screened porch. Full bath. No AC/TV.



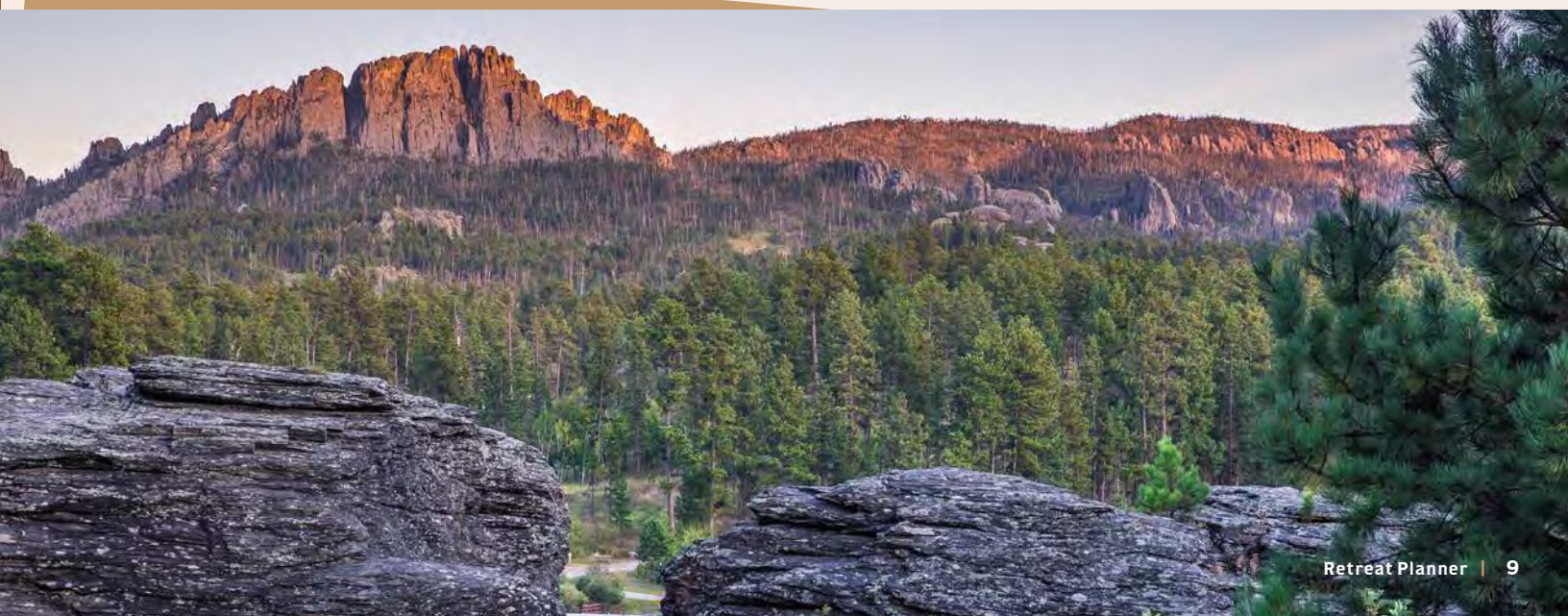
## MOUNTAIN CABIN 6

This cabin features three bedrooms and sleeps up to six people. Bedroom one has a queen bed; bedroom two has two twin beds; and bedroom three has a set of bunk beds. It has a living room, a full kitchen and a stone fireplace. AC/TV, and gas grill.



## MOUNTAIN CABIN 7

This two-room cabin sleeps up to three people. It has a queen bed in one room and a twin bed in the other. There is an electric fireplace, a screened porch and a microwave and small refrigerator. No AC/TV.

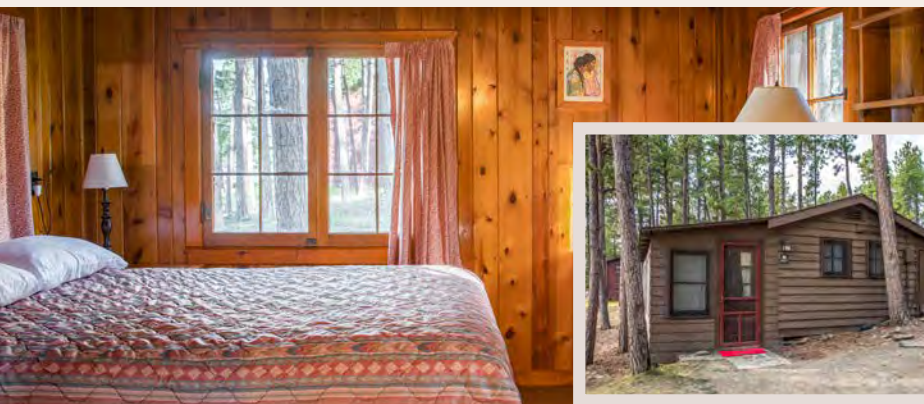






## MOUNTAIN CABIN 8

Up to four people can sleep in this two-room cabin. It has an electric fireplace and no kitchen. There is a queen bed in one room and two twin beds in the other. It has a microwave and small refrigerator. Full bath. No AC/TV.



## MOUNTAIN CABIN 9

There are two rooms in this cabin, which sleeps up to four. It has a queen bed in one room and two twin beds in the other. There is an electric fireplace, microwave and small refrigerator. Full bath. No AC/TV.



## MOUNTAIN CABIN 10

This two-room cabin has an electric fireplace. It sleeps up to four people. One bedroom has a queen bed. The other room has two twin beds, along with a microwave and small refrigerator. Full bath. No AC/TV.





## MOUNTAIN CABIN 11

Four people can sleep in this one-bedroom cabin. It has two queen beds in the bedroom and a kitchenette. It has an electric fireplace. Full bath. No AC/TV.



## MOUNTAIN CABIN 12

Up to four people can sleep in this cabin, which has two rooms, no kitchen and an electric stove. One room has a queen bed and the other has two twin beds and a microwave and small refrigerator. Full bath. No AC/TV.



## MOUNTAIN CABIN 13

This one-room cabin sleeps up to four people. It has a queen and two twin beds, electric heat and a microwave and small refrigerator. Full bath. No AC/TV.



## MOUNTAIN CABIN 14

The cabin features a day area, bedroom, full kitchen and electric heat. It sleeps up to six people. the bedroom has a queen bed, and the day area has four twin beds. Full bath. No AC/TV.





## MOUNTAIN CABIN 15

Two bedrooms and a day room will accommodate up to nine people. One bedroom has a set of bunk beds, a double bed, and a twin bed. The other has a queen bed. The day area has a futon. There is a living room, a full kitchen and a fireplace, large deck and gas grill. Full bath. No AC/TV.



## MOUNTAIN CABIN 16

This three-bedroom cabin sleeps up to 12 people. It has a bedroom with one queen bed, one bedroom with two sets of bunk beds and a double futon, and a third master bedroom with a queen bed and a bathroom. There is also a sofa sleeper in the living room. There is a full kitchen, fireplace and a gas grill. Second bathroom. No AC/TV.



## MOUNTAIN CABINS 17&18

There are three bedrooms and a sofa sleeper in each cabin, accommodating eight people. One bedroom has a king bed, another has two twin beds and the third also has two twin beds. There is a full kitchen, living room and covered porch with gas grill. No AC/TV.



## MOUNTAIN CABIN 20

There is a living room, day area, full kitchen, fireplace and 1 1/2 bathrooms in this two-bedroom cabin that sleeps eight. The first bedroom has two queen beds and a 1/2 bath. The other bedroom has a king bed and the day area has two twin beds. AC/TV/heat.







**MT. RUSHMORE  
RESORT & LODGE**  
*at Palmer Gulch*



## KOA CAMPING CABINS

These cozy one- and two-room cabins are perfect for couples, cyclists, small families and other adventurous souls. Guests provide sleeping bags or linens, pillows, towels and outdoor cooking gear. Cabins have electricity and can sleep five to six people.

There are five restroom/shower facilities in the campground and three public laundry facilities. Our community camping kitchen has stove burners, two gas grills and a sink area. Every campsite has a picnic table and campfire ring. Have a pet? Pets are welcome if they are leashed, well behaved and comply with the national KOA pet policy for non-aggressive animals.\*

*\*Fees apply to pets*

**Call us with any questions  
at 1-800-562-8503.**





# RECREATIONAL VEHICLES

## DELUXE RV CAMP SITES

Beautifully landscaped, spacious patio sites are big enough to accommodate even the largest rigs with multiple slideouts. Patios feature enhanced furniture, fire pit, gas grill and swing.

### THEY ALSO FEATURE:

- 50/30/20 amp power
- Water/sewer hookups
- Cable TV
- Pull-through

## RV CAMP SITES

- Full hookups
- Water/electricity
- Tents welcome
- Pull-through or back-in sites
- 30 or 50 amp

# TENT SITES

Across the scenic Palmer Gulch valley, there are many KOA tent sites sprinkled throughout the forest and clearings. Guests will find comforts of home nearby with five restroom/shower houses, three laundry facilities, and a camping kitchen with stove burners, gas grills and a sink. Also offered are Deluxe Tent Sites featuring covered picnic table with built in UBC charging and electrical outlets.







## WE'RE CENTRALLY LOCATED IN THE BLACK HILLS!

Plan easy day trips to Mount Rushmore National Memorial, the Crazy Horse Memorial, Deadwood, Devils Tower National Monument and Badlands National Park.

## DISTANCE FROM PALMER GULCH

(all mileage is approximate)

**Mount Rushmore** – 5 miles

**Bear Country USA** – 16 miles

**Crazy Horse** – 16 miles

**Reptile Gardens** – 18 miles

**Rapid City Regional Airport** – 33 miles

**Deadwood** – 43 miles

**Wall Drug** – 80 miles

**Badlands National Park** – 86 miles

**Devils Tower** – 122 miles

**Denver Airport** – 366 miles

**Yellowstone National Park** – 462 miles

**Jackson, WY/Teton National Park** – 489 miles

**Minneapolis Airport** – 600 miles

**Salt Lake City Airport** – 640 miles





# DINING *at* Mount Rushmore Resort

If you are hungry for a great meal, hot drink or sweet treat, the Mount Rushmore Resort at Palmer Gulch is the place for you. There are several options to choose from to satisfy your cravings for breakfast, lunch and dinner—or that between-meal snack. Whether you are here on vacation or at a church retreat, a family reunion, a wedding or a business conference, we are eager to serve up a memorable dining experience. Need food for a special event? Contact one of these eateries to make catering arrangements.

## THE PROSPECTOR'S TENT

From Memorial Day to Labor Day, The Prospector's Tent serves up a tasty deal: all-you-can-eat pancakes at a great price. Bacon, sausage, giant cinnamon rolls, eggs, milk, juice, coffee and other breakfast favorites are available for an additional fee. The Prospector's Tent also offers dinners on select nights throughout the summer.

## TURTLE TOWN

**605-574-3413**

This restaurant has great fast food. Gourmet pizza, burgers, fried chicken and buffalo wings are just a few of the mouth-watering offerings you'll find at Turtle Town. Or treat yourself to specialty shakes, sundaes and hand-scooped favorites.

## GRAPES & GRINDS

How about a latte, espresso or specialty coffee to start your day or rev up your evening? Our baristas can deliver some special latte art to accompany your treat. If wine is more to your taste, join us for wine tastings of local and specialty wines. Sample many flavors of designer fudge made fresh at the resort.

## CHUCK WAGON SUPPER

**605-574-3412 | [www.ridesouthdakota.com](http://www.ridesouthdakota.com)**

Climb aboard one of our horse-drawn wagons and take a ride into the Black Hills National Forest to find a great dinner destination. The wagon will deliver its load of hungry travelers to a genuine working chuck wagon camp. Watch a real "dough boxer" grill over an aspen wood fire and taste the Dutch oven side dishes. This is authentic Western family fun under a big South Dakota sky.

## THE PEAK GRILL & TAP ROOM

**605-574-9559**

**[www.thepeakbh.com](http://www.thepeakbh.com)**

Enjoy lunch or dinner in the comfortable surroundings of our fine restaurant, just steps from the Mount Rushmore Lodge at Palmer Gulch. Whether you are camping under the stars or staying in our presidential suite, you can enjoy the rustic dining room featuring a slate fireplace, or the sunroom that offers a beautiful view of Black Elk Peak. Our Tap Room serves up some refreshing drinks.

The fine fare at the Peak isn't limited to the restaurant. We cater meals to private events at locations around the resort, including the Elkhorn Room, Palmer Reunion Hall, the Group Tent and the Group Pavilion. Several menu options are available. Call for pricing or more information.





# GATHERING *at* Mount Rushmore Resort



## ELKHORN ROOM

This room inside the KOA building seats up to 50 people for banquets. There is additional seating on the balcony. The room has a sink, two small refrigerators and microwave oven. The room is also set up for audiovisual presentations.

## REUNION HALL

In the guest ranch days of Palmer Gulch, this rustic reunion hall was the community's primary gathering place. It has a huge stone fireplace (wood is provided). A small side room, 11 feet square, can be set up for food service. The kitchen has an electric range and full-sized refrigerator. Dishes, pans and utensils are not supplied. Capacity: 70 people.

## GROUP PAVILION

Our covered shelter has roll-down canvas walls on two sides. The floor of this outdoor shelter is worry-free concrete, and there are picnic tables, lights, electrical outlets and a campfire ring. Capacity: 125 people.

## THE GROUP TENT

This gathering place is perfect for weddings, anniversary celebrations, corporate retreats, family reunions and other special occasions. Located in a beautiful meadow setting, the 40-foot by 100-foot tent seats 200-250 people at picnic tables. Chairs and tables may be rented at an additional cost. The tent may be used for privacy or protection from inclement weather, if needed. Call our group coordinator at 605-574-3404 for pricing and availability.



# ALL KINDS OF FUN

..... *awaits you!*

There's so much to do at the Mount Rushmore Resort at Palmer Gulch, your challenge will be how to fit it all in. Horseback rides, pools, slides, mini golf, ATV and UTV rentals, hiking... the list goes on and on. We are here to help. Check out our weekly activity schedule and see what fun is on tap. Or stop by our concierge desk in the main building, where our experienced staff will help you select the best sightseeing options and other resort activities.

- **Splash pad**
- **Swimming pools & hot tubs**
- **Waterslide**
- **Evening shuttle to Mount Rushmore (\$)**
- **Movies**
- **Evening entertainment**
- **Horseback trail rides (\$)**
- **Sand volleyball**
- **Mini golf**
- **Jump pillow**
- **Fishing pond**
- **Playgrounds**
- **Chuck wagon dinner show (\$)**
- **Wine tastings**
- **GaGa Ball**
- **Basketball & horseshoes**
- **Planned family activities**
- **Hiking trails**
- **Giant chess & checkers**
- **Wagon & vintage fire truck rides**
- **Car rentals (\$)**
- **UTV & golf cart rentals (\$)**
- **Bike rentals (\$)**
- **Giant inflatables**
- **Gold panning (\$)**
- **Climbing wall**
- **Local musicians**
- **Sunday morning worship**
- **Corn Hole**
- **Ladder Ball**

**(\$)** Fees required.

**(Activities available Memorial Day through Labor Day.)**





# BOOK YOUR *group event*

Groups love Palmer Gulch. And Palmer Gulch loves groups. It is easy to schedule your next group or family event at the Mount Rushmore Resort at Palmer Gulch. Our specially trained group event coordinator will be happy to help you arrange the perfect gathering.

HERE ARE FIVE EASY STEPS TO YOU GET STARTED WITH A GREAT EVENT PLAN:

- 1. Choose two or three possible dates for your future event at the Mount Rushmore Resort at Palmer Gulch.**
- 2. Determine the approximate number of guests.**
- 3. Consider what type of lodging would be appropriate for your event (lodge, cabins, camping, etc.).**
- 4. What are your catering needs? Be prepared to discuss any dining needs or other requests when you call.**
- 5. Call 800-562-8503, ext. 3404, to book your event with our group event coordinator (or direct 605-574-3404).**

Once you've booked your event, individual attendees can call the Mount Rushmore Resort at 800-562-8503 to make reservations from the group's lodging block.

An updated rate schedule will be provided once it is finalized. Listed rates do not include sales tax and fees. A deposit equal to one night's rate is required for all lodging reservations, unless other arrangements are made with group event coordinators. Payment on any lodging balance is due and paid upon arrival at the resort.

## BOOK NOW



**MT. RUSHMORE  
RESORT & LODGE**

12620 Hwy 244, Hill City, SD 57745

(800) 562-8503

[groups@palmergulch.com](mailto:groups@palmergulch.com)

[palmergulch.com](http://palmergulch.com)



# BOOK IT!



## PICK YOUR ACCOMMODATIONS

---

---

---

## DINING PLAN

---

---

---

## ACTIVITIES PLAN

---

---

---

# GETTING THERE

**The resort is on South Dakota Highway 244, five miles west of Mount Rushmore National Memorial, halfway between Hill City and Keystone.**

Rapid City Regional Airport is just 35 miles from the Mount Rushmore Resort at Palmer Gulch. It has direct airline connections to many U.S. cities. United Airlines, Delta Airlines, American Airlines and Allegiant Air all offer service to Rapid City. Black Hills Central Reservations, 800-529-0105 or [blackhillsvacations.com](http://blackhillsvacations.com), is ready to assist you. Be sure to tell them that you have reservations with the Mount Rushmore Resort at Palmer Gulch.

HERE IS SOME HELPFUL INFORMATION FOR YOUR ARRIVAL AT THE MOUNT RUSHMORE RESORT AT PALMER GULCH.

- *Check-in time for all resort lodging is 3 p.m. or later.*
- *Upon arrival at the resort, the organizer of your group can check in with our Group Coordinator at the Lodge front desk to finalize arrangements.*
- *Guests are welcome to arrive early on the day of their reservation; however, lodging may not be prepared for occupancy until 3 p.m. Guests may use the resort's recreational facilities until their lodging becomes available.*
- *Weekend activity schedules, Black Hills maps and visitor information materials are available at the Lodge and Registration building.*
- *Checkout time is no later than 11 a.m.*
- *Quiet hours at our resort are from 10 p.m. to 7 a.m.*
- *We gladly accept cash, VISA, MasterCard or Discover.*
- *A \$12.00 per day, per site, resort fee covers activities unless otherwise noted.*